



UP TO 6,318 SF AVAILABLE FOR SALE OR LEASE

1327 East Thomas Street
Arlington Heights, IL



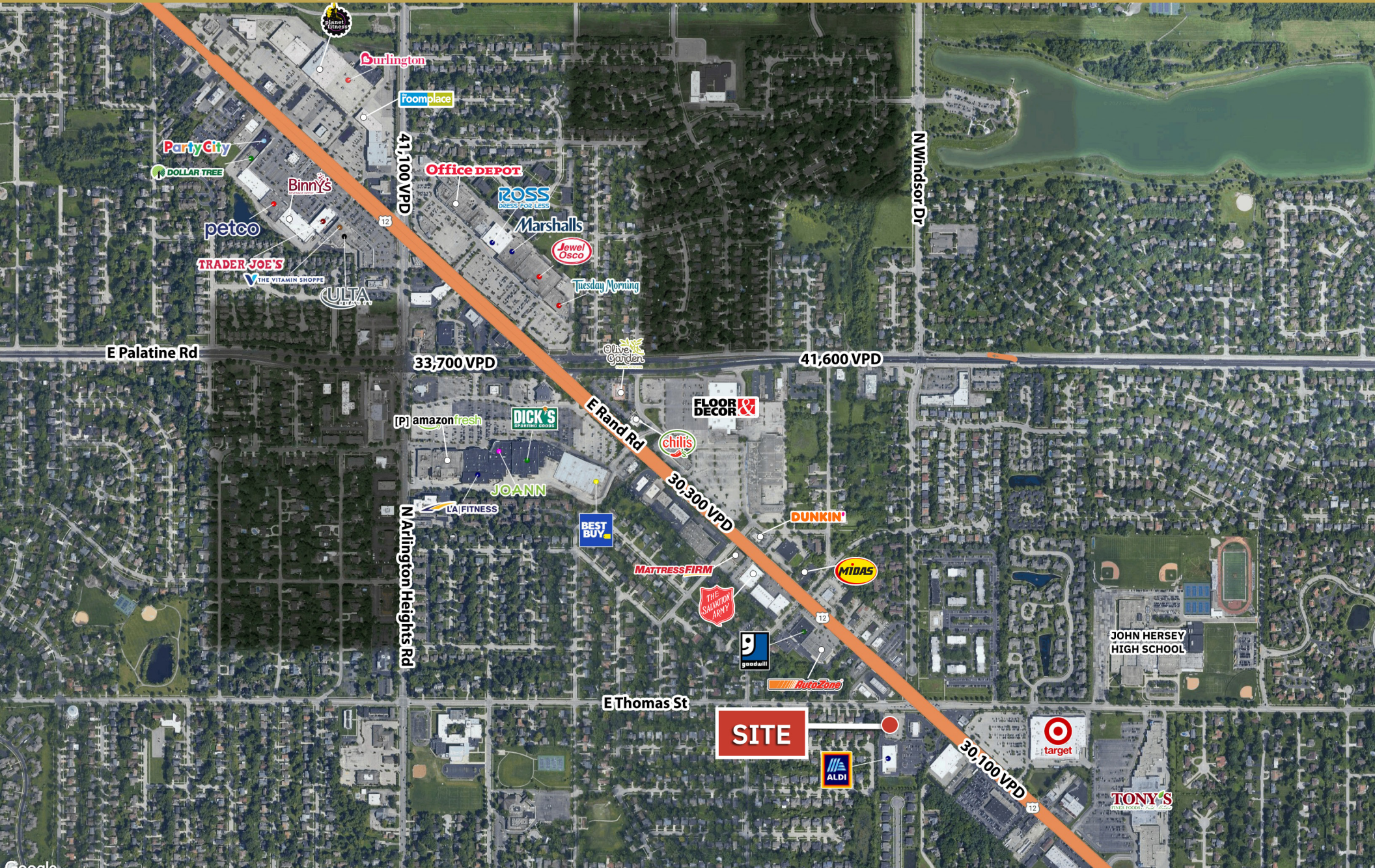
SULLY STADLER
847.472.5013
sully@greatstreetrealty.com

6,318 SF AVAILABLE

1327 East Thomas Street | Arlington Heights, IL



AERIAL



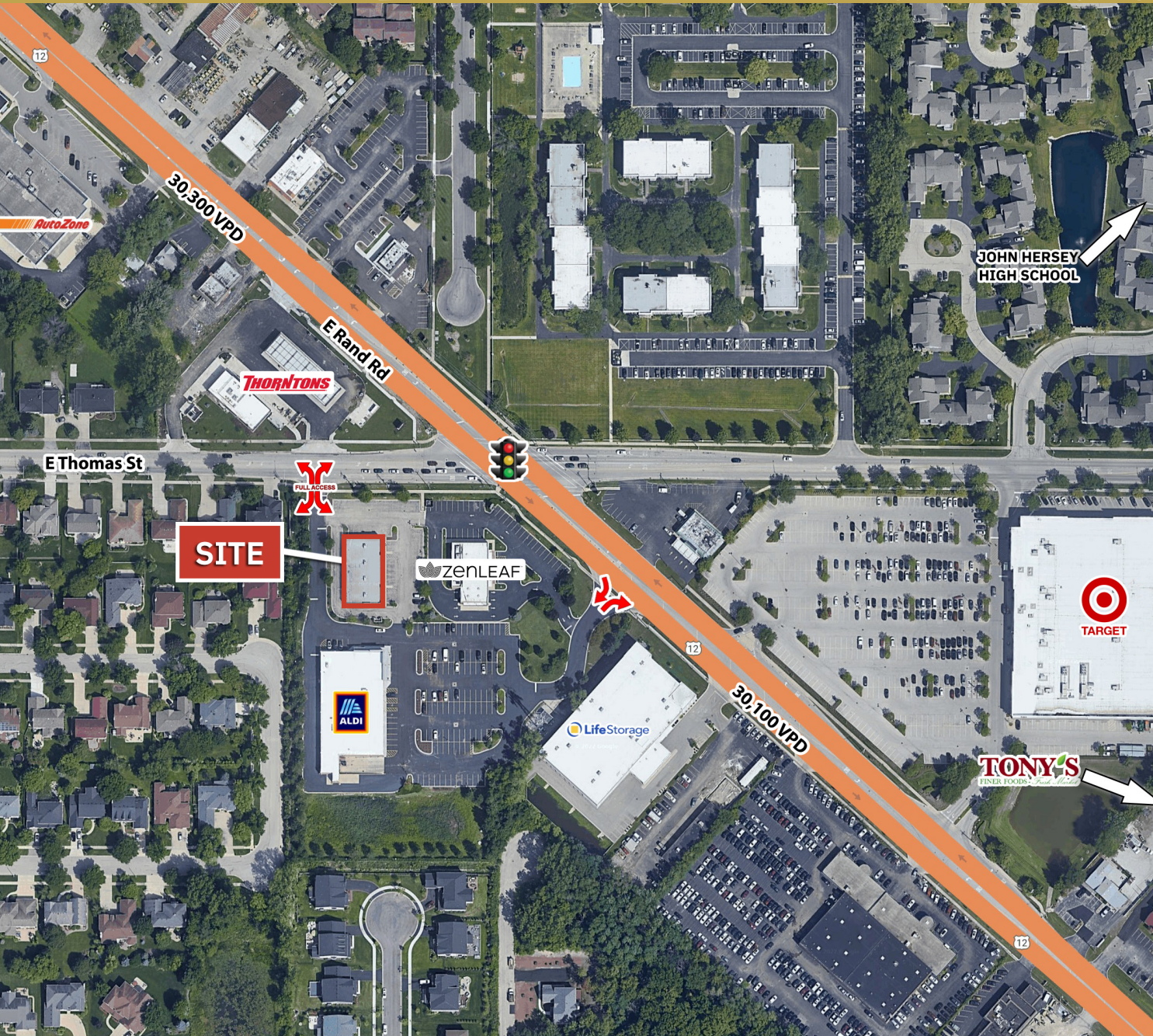
The information provided herein has either been given to us by the owner of the property or obtained from sources that we deem reliable. We have no reason to doubt its accuracy but we do not guarantee it. You should conduct a careful, independent investigation on the property and verify all information. Any reliance on this information is solely at your own risk.

6,318 SF AVAILABLE

1327 East Thomas Street | Arlington Heights, IL



PROPERTY OVERVIEW



- 6,318 SF building
- Located off of the intersection of Rand Rd & Thomas St (Rand Rd: 30,100 VPD)
- Situated between RTE 53 Interchange and the Randhurst Village (Regional Shopping Center)
- Less than 1 mile from John Hersey High School and St Viator High School
 - John Hersey HS: 1,943 Students
 - St Viator HS: 955 Students
- Less than 2.5 miles from Downtown Arlington Heights

DEMOGRAPHICS		
TOTAL POPULATION	1 MILE	12,607
	3 MILE	132,659
	5 MILE	326,375
DAYTIME POPULATION	1 MILE	4,530
	3 MILE	69,464
	5 MILE	188,695
AVERAGE HH INCOME	1 MILE	\$144,093
	3 MILE	\$125,024
	5 MILE	\$117,828

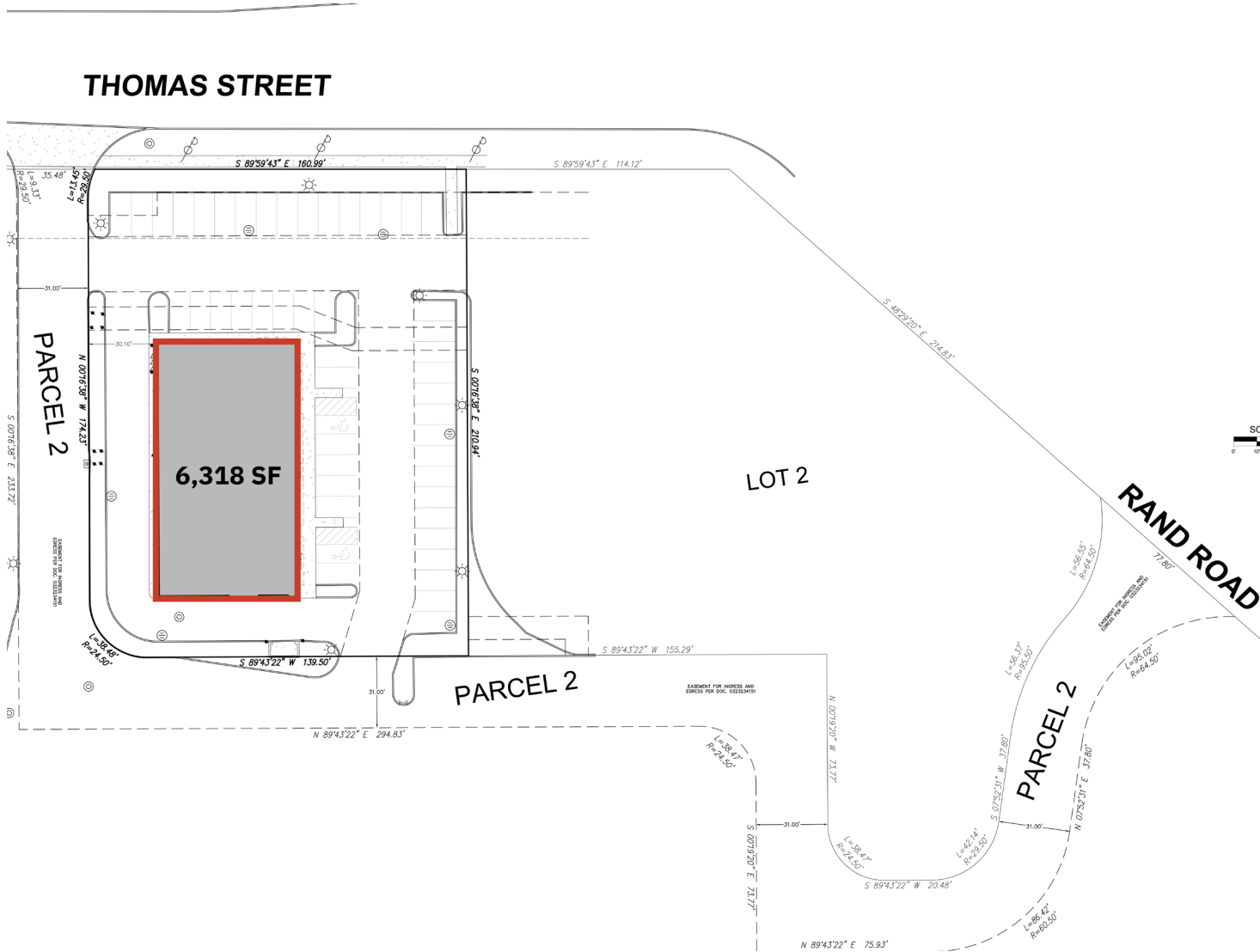
The information provided herein has either been given to us by the owner of the property or obtained from sources that we deem reliable. We have no reason to doubt its accuracy but we do not guarantee it. You should conduct a careful, independent investigation on the property and verify all information. Any reliance on this information is solely at your own risk.

6,318 SF AVAILABLE

1327 East Thomas Street | Arlington Heights, IL



SURVEY



The information provided herein has either been given to us by the owner of the property or obtained from sources that we deem reliable. We have no reason to doubt its accuracy but we do not guarantee it. You should conduct a careful, independent investigation on the property and verify all information. Any reliance on this information is solely at your own risk.